



MOTOBIDGE™ IP INTEROPERABILITY SOLUTION

PROVEN MISSION CRITICAL PERFORMANCE YOU CAN COUNT ON



MOTOROLA MOTOBIDGE™ SOLUTION

THE PROVEN AND AFFORDABLE WAY TO BRIDGE THE GAPS IN YOUR COMMUNICATIONS

- **Interoperability** - Interoperate across wide range of disparate Networks and user devices. Extend Radio network coverage through the IP network
- **IP Dispatch** - Over-IP dispatch and control. Simple graphical user interface. Advanced control features. Remote dispatch
- **Over-IP Radio Voting** - Efficiently communicate with required destination while saving system resources and cover “dead spots”
- **Designed to Survive** - Distributed architecture with no single point of failure
- **Superior Audio Quality** - Fast PTT and reliable audio over IP. Audio encryption. Advanced radio and voice signaling
- **Highly Scalable** - Easily expandable from a portable, on-scene solution to a city, county or statewide solution
- **Security** - Digital encryption and optional firewall



MOTOROLA MOTOBRIDGE™ MAIN MARKETS CONNECTS YOU TO THE FUTURE

MOTOBRIDGE™ is an easy and fast way to establish communications between disparate systems in support of day-to-day Utilities operations, Fleet management and Emergency services.

MOTOBRIDGE™ Utilities

- Public Safety
- Electricity
- Oil & Gas
- Water
- National/Municipal disaster center
- Fire brigade
- Emergency Medical Services (EMS)
- Transportation (Trains, Buses, Road assistance)
- More

The MOTOBRIDGE™ advanced IP interoperability enables the operator ability to extend its Radio network coverage through the IP network, to perform smooth Radio network transition (upgrade) and more.

WIDE INTEROPERABILITY

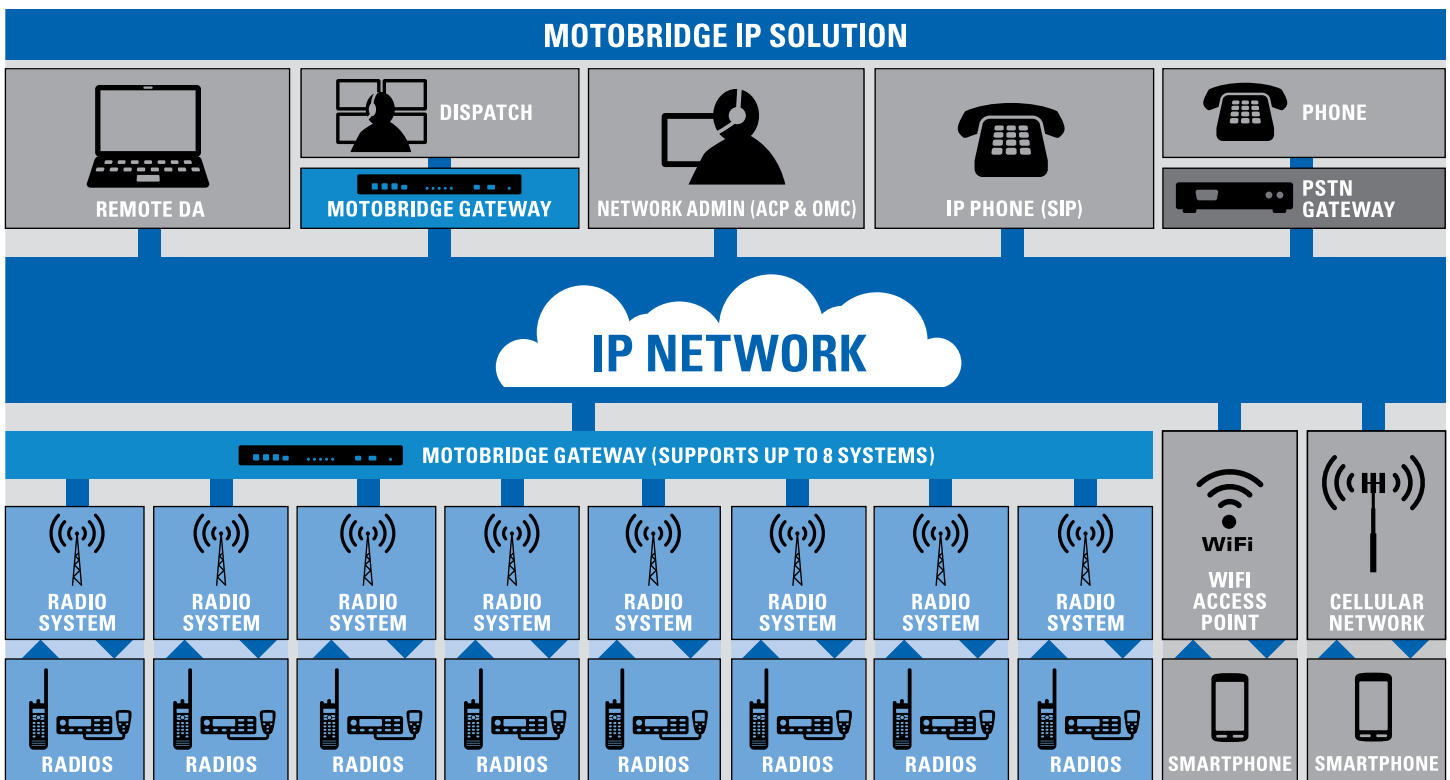
Communication interoperability is a well-recognized imperative for public safety, utilities, homeland security, law enforcement, or any other organization that has a need to share intelligence, coordinate plans, and mount successful joint operations with others operating on disparate systems.

- Adaptable solution for interoperability across a wide range of networks and user devices
- Intelligent, robust gateways provide advanced radio and signaling capabilities to ensure mission critical performance
- Ability to transmit emergency alarm notifications between connected users (on Networks that supports this feature)
- Recognizes radio tones, such as accept and deny, from Motorola radios

In today's highly competitive world it is essential to keep up the speed. There is no place or time for communication delays, interoperability issues, communication resources wastes or communication transition issues. The bottom line is what matters and the benefit is the only thing that counts.

The MOTOBIDGE™ System

- Connect between different Radio types
- Connect between different services
- Bridge between communication systems on different dimensional spaces
- Overcome communication geographical boundaries
- Extend your Radio coverage through the IP network
- Smooth Radio network transition
- Rich IP Dispatch control features
- Incident control from site
- VoIP Telephony and Conferencing
- Over-IP Radio Voting



FLEXIBLE IP DISPATCH

MOTOBIDGE™ provides state-of-the-art software tools for a range of uses and environments to enable the right people to communicate and make decisions, regardless of where they are at the time of an incident. Featuring an intuitive, easy to learn graphical user interface, the dispatch applications can be customized for use by personnel in a dispatch center, office setting or mobile command center. Users in the field have the flexibility to connect via PCs or Smartphones over IP, WiFi or 3G/4G.

Supported communication networks for interoperability

- Radio (P25, Analog, Conventional, Trunked, ASTRO, MOTOTRBO, TETRA, Non-Motorola Radio (TX, RX & PTT))
- VoIP (Including SIP)
- Cellular
- Satellite Phones
- Wire-line
- PSTN

4/8 PORT GATEWAY UNIT (RGU/WSGU)

The gateway unit is the primary hardware component required to create a MOTOBRIDGE™ interoperability network and can be configured to serve as either a Radio Gateway Unit (RGU) or a WorkStation Gateway Unit (WSGU).



RADIO GATEWAY UNIT

The RGU is used to connect up to 4/8 disparate radio systems into the MOTOBRIDGE™ Solution. The RGU is small and robust which makes it possible to be mounted at a remote tower site, at the master site, or in a small radio closet at the command center.

RGU main tasks

- Connects Radio equipment to the system
- Performs all audio buffering and Signal processing
- Performs VoIP packet-distribution that allows all users to get a replica of the audio from each radio
- Supports up to 4 or up to 8 access radios
- Connected to peers over LAN or IP
- Encrypts audio over the IP network

WORKSTATION GATEWAY UNIT

Workstation Gateway Unit (WS-GU) main tasks

- Perform Dispatching functionality and/or Interfaces with the Dispatch Console PC
- Can be defined also as RGU (RGU/WSGU) in small systems



DISPATCH APPLICATIONS

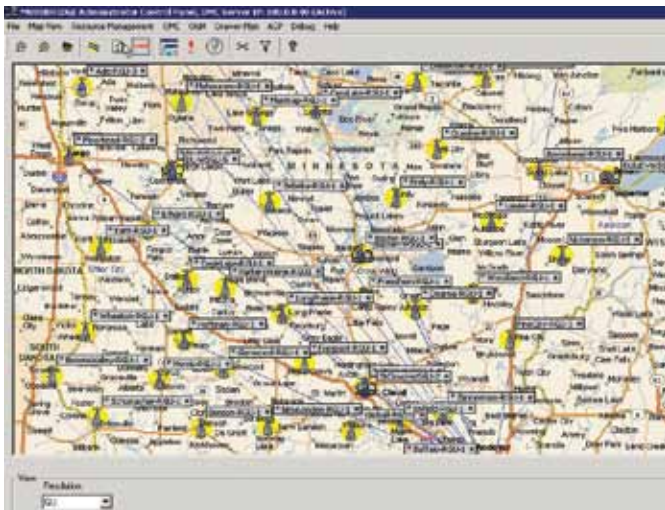
State-of-the-art, intuitive, and easy to use GUI, which uses the latest Microsoft technology, providing the ultimate graphic quality and user experience. This application allows the dispatcher to view all radio resources available for interoperability and control the communication through the networks.

Local Dispatcher on the Dispatch Console PC that is connected to the WSGU allows control over dispatch remote radios, intercom connections, audio conferences and phone calls.

The DA is intended for mission critical user and it is most robust application, runs on Microsoft Windows operating system.

The Dispatch GUI offers

- Intuitive drag-and-drop operation
- Enhanced for touch screen
- Customizable sizing and layout
- Multi language support
- IP Camera support



ADMINISTRATOR CONTROL PANEL (ACP) CLIENT PC & OPERATIONS MANAGEMENT CENTER (OMC) SERVER

ACP provides a user level interface to the OMC and is used to view and monitor the status of the entire MOTOBIDGE™ distributed network stored in OMC such as Active patches, Conferences and Security parameters. ACP overrides any commands made at the dispatcher level for improved resource utilization. The ACP's reports and alarm statistics can be instantly recalled for post-mortem evaluations and protocol assessments. OMC Provides control, administrative functions, network management tools.

SESSION INITIATION PROTOCOL (SIP) PROXY SERVER

SIP proxy server communicates with the gateway units in the system (RGU, WSGU) which implement the SIP User Agent (UA) portion of the standard which complies with the IETF-RFC3261 standard for multimedia call routing and telephony services in the Internet.

MOBILE WIRELESS DISPATCH APPLICATION (MWD)

- Provides dispatching capabilities from an Android OS based Smartphone
- Operating over Wi-Fi and 3G/4G network connections
- The MWD user can monitor, control and patch various Radio types and communicate with other dispatchers by creating intercom connections
- Mainly used by senior commanders





MOTOBRIDGE™ leverages prior investments in systems, towers, dispatch centers, radios and other equipment. As field user keeps their familiar radios training costs will be minimized.

POWERFUL FLEXIBILITY

More than a simple audio patch, traditional IP gateway, or pure software solution, MOTOBRIDGE™ is a flexible solution with capabilities that allow it to fulfill a more advanced role in an organization's interoperability strategy.

In addition to providing interoperability across disparate networks, MOTOBRIDGE™ provides

- IP dispatch functionality
- Full-duplex conferencing
- Direct phone (PSTN, Mobile, SIP) access to radio networks
- Proxy Multicast functionality
- Over-IP radio voting
- Network management
- Standards-based IP connectivity

DISASTER SURVIVAL ABILITY

MOTOBRIDGE™ features a robust, fully distributed architecture of VoIP gateways for peer-to-peer based interoperability services. It is expertly designed by Motorola to assure the highest possible level of survivability and reliability, with maximum fault tolerance and built in redundancy. The MOTOBRIDGE™ distributed architecture has no single point of failure. If a piece of equipment is damaged, or if the power goes out, redundant equipment takes over.





HIGH AVAILABILITY

The distributed MOTOBIDGE™ gateways handle all the audio processing and advanced signaling with no central audio switch. Dispatch commands and voice are processed immediately, regardless of how busy the system becomes.

Established talk-paths are sustained by the MOTOBIDGE™ gateways and are not impacted in the event of a PC or management server failure.

MOTOBIDGE™ is optimized to operate on existing standard SIP-based customer networks without modifications, special multicast routers or proprietary network hardware.

Users experience fast PTT and reliable audio over IP, plus QoS support ensuring real-time audio gets highest priority over other types of traffic.

SUPERIOR AUDIO QUALITY

MOTOBIDGE™ gateways are designed with on-board security and sophisticated audio and signal processing in real time. Users experience fast PTT and reliable audio over IP, plus QoS support ensuring real-time audio gets highest priority over other types of traffic.

Dedicated processors manage different resources simultaneously

- Audio encryption processor handles more than 1000 AES-256 packets per second
- Voice communications are clear with minimum delay
- Three communication processors control and manage the three LAN segments present in each gateway
- Data processor handles all of the radio data in/out from up to eight radios connected per gateway, maximizing voice availability

INTEGRATION WITH MOTOROLA SYSTEMS

All Motorola radio features are available at the dispatcher station using the same user interface through the Dispatch Application GUI. "Virtual control heads" allow the dispatch work-station screen to emulate the familiar controls found on the user's Motorola mobile radio.

MOTBRIDGE™ SYSTEM CAPABILITIES

MAXIMUM CAPACITY BY FEATURE	NUMBER
Configured Radio Resources	5,000
Connected Radios per gateway	8
Simultaneous talk-paths per radio gateway	60
Simultaneous talkpath per system	64,000
Software-only dispatch clients	3,840*
Mobile dispatch (SmartPhone) clients	3,840*
Active local dispatch points	1,000
Active interoperability groups	2,500
Active channels per interoperability group	15
Full-duplex conference participants	8
Dial ports (users)	5,000
Voting nodes per voting gateway	64
Assignable PTT priority levels	8
Assignable user privilege levels	9
Administrator clients per OMC	10

* Includes both Software-Only and Mobile Dispatch clients

MOTBRIDGE™ GATEWAY SPECIFICATIONS



DIMENSIONS

Height	1 rack unit (1.75 in)
Width	Desk mount = 17 in Rack mount = 19 in (incl. HW)
Depth	9.5 in

ENVIRONMENT

Operating	0° to 50°C
Non-Operating	-20° to 80°C
Humidity	10% to 90%

POWER

GU Input Power	+22 to +26 VDC
Dissipation	20W

RADIO

	20 kg (47 lbs)
Output Voltage	-25dBm to +10dBm @ 600 Ohms
Output Impedance	600 Ohms
Input Voltage	20mV to 3V RMS @ 10K Ohms
Input Impedance	10K Ohms

AUDIO

Mic	+10V, 2K Ohm pull-up
Headset Input Impedance (Mic)	2K Ohm
Headset Output Impedance (Earpiece)	50 Ohm
Speaker Output Impedance	1 K

COMMUNICATIONS/PORTS

8 DB25 Audio Ports
2 RJ45 10/100 MB Ethernet Ports
1 DB9 MMI local configuration port
1 Speaker output
1 Headset Stereo/Mono connection
1 PTT connection

For further information please contact your account/regional sales manager or danny@motorolasolutions.com

Motorola Solutions, Inc. 1301 E. Algonquin Road, Schaumburg, Illinois 60196 U.S.A. motorolasolutions.com
 MOTOROLA, MOTO, MOTOROLA SOLUTIONS and the Stylized M Logo are trademarks or registered trademarks of Motorola Trademark Holdings, LLC and are used under license.
 All other trademarks are the property of their respective owners. © 2013 Motorola Solutions, Inc. All rights reserved.

anfer

RADIOCOMUNICACIONES

info@anfer.com www.anfer.com

Tel. (+34) 963 311 410 Fax. (+34) 963 311 411